

WATER-RELATED ASSETS

INSPECTION SOLUTIONS



SAAB RDS
TECHNOLOGY ENABLER

www.saabrds.com

Water-related Asset Inspection

Predictive Maintenance

- **Safe operations** with **no or limited downtime** in any environment.
- **Data-driven, cost-effective, safe and clean** inspection and surveying services.
- **Quick and complete insight** (above and under water) of water related assets.
- Access to **hard or dangerous** to reach places with aquatic drones.
- **Minimize downtime and maximize OPEX.** Enable sound **budget** and asset **maintenance** decisions thanks to accurate and timely data.



- **Safe inspection of:**
 - Sea walls, jetties, docks, and other underwater structures
 - Oil and Gas pipelines
 - Water pipelines
 - Offshore Platforms
 - Dams
 - Bridges
- **Accurate detection of:**
 - Corrosion
 - Thickness
 - Cracks
 - Fractures
 - Leaks
 - Structural Issues

Our Products

UNMANNED SURFACE VESSEL (USV)

- Aquatic drone for visual inspection above water (bridges, jetty's, quay walls)
- Aquatic drone for bathymetry and hydrography inspection (also in shallow waters)
- Flat aquatic drone for visual inspection (pipes, tubes, culverts, channels)
- Mini aquatic drone for visual inspection of narrow places (pipes, tubes, culverts)



REMOTELY OPERATED VEHICLE (ROV)

- Underwater robots for visual inspection (quay walls, sheet-piles, foundations)

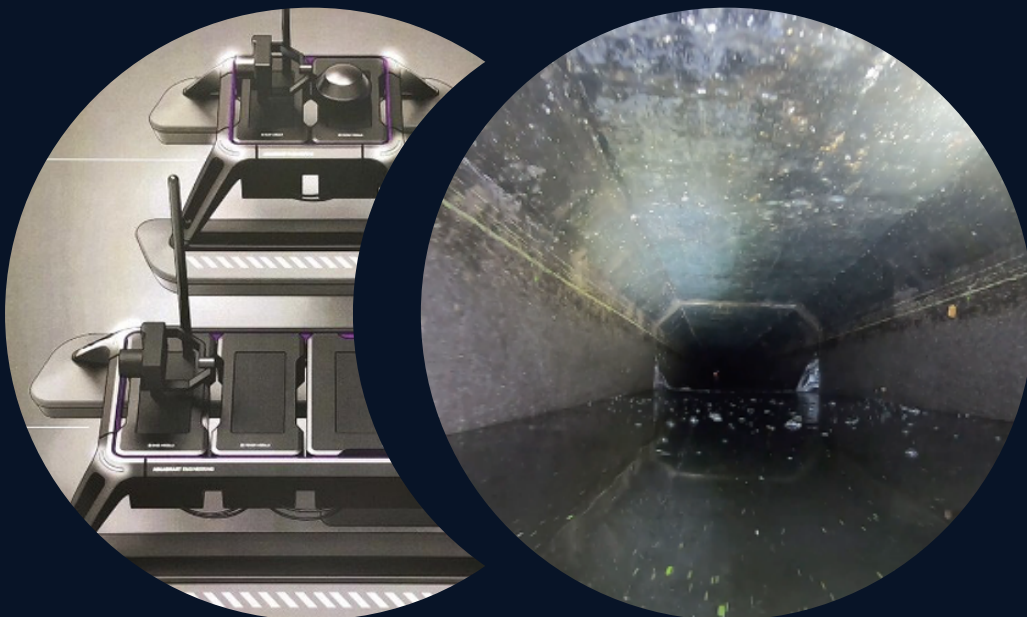
ROBOTS

- Tank inspector (wildlife crossings)
- Crawler robot (quay walls, flat underwater constructions)
- Climber robot (pillars, piles)



Sonar DRONE

Used for **bathymetry and hydrography** inspection, above and under water on hardly or dangerous to reach places, even in shallow waters.



Technical specifications

- Net. weight: 55 kg
 - Length: 144 cm
 - Width: 83 cm
 - Hight: 61,5 cm
- Speed: 2 – 8 knots (depends on environmental and weather conditions)

Communications

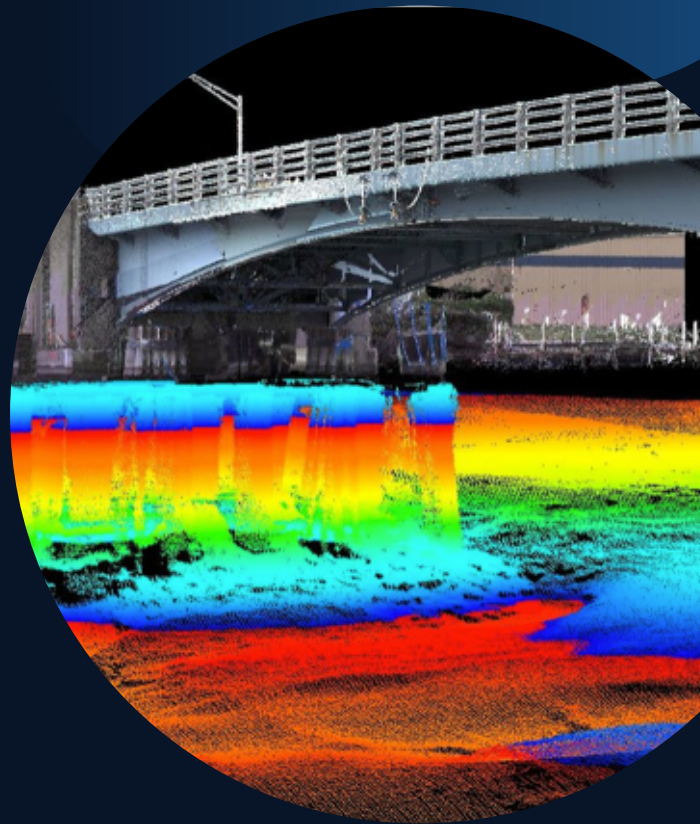
- 1 transmitter - FrSky Terranus D9
- 1 receiver – FrSky R9 step

Our Advantage

Aquatic drones, ROV's and robots of several sizes;

Multi-sensor platform: built as **modular platforms**, they can be equipped with the newest sensors, imaging systems, and sonars.

Multidisciplinary team that can design and assemble **tailor-made** drones and robots.



The collected data is presented in a **geo-referenced 3D-Model** that makes it possible to measure and locate damages and **compare** them with **previous** collected **data sets**.

Detailed Interpretation is carried by the customer's own material experts or one of our expert partners.



Contact Us

sales@saabrds.com

info@saabrds.com

USA

+1 (702) 840 1952

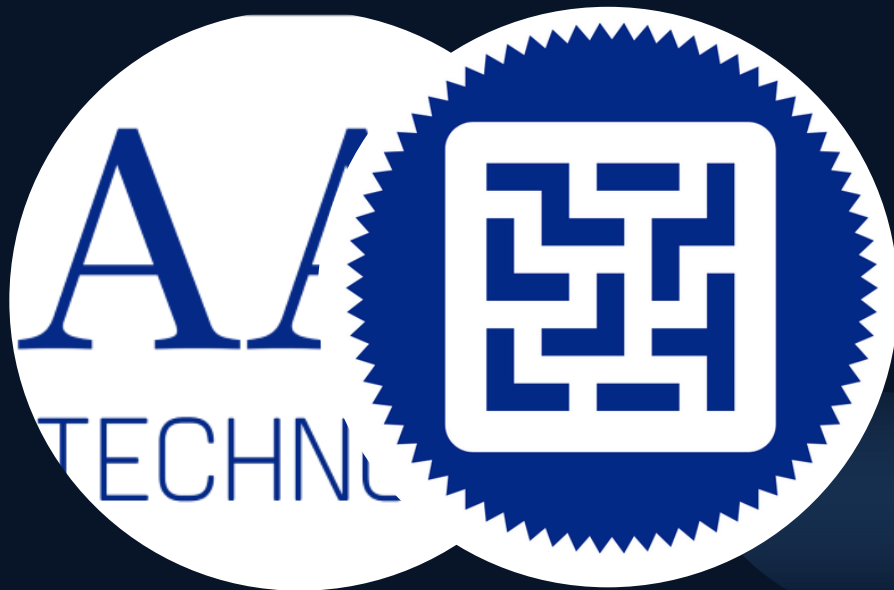
SAUDI ARABIA

+966 55 067 6041

+966 53 276 3435

LEBANON

+961 3 136 087



saabrds.com

Powered by
AquaSmart^{XL}



SAAB RDS INC.
2023